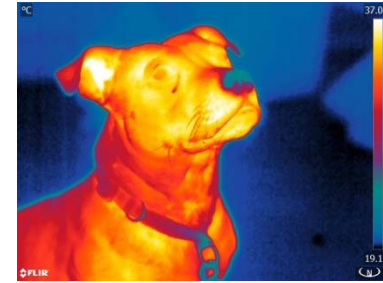


# Dog Behaviour Research

- Volunteers needed!

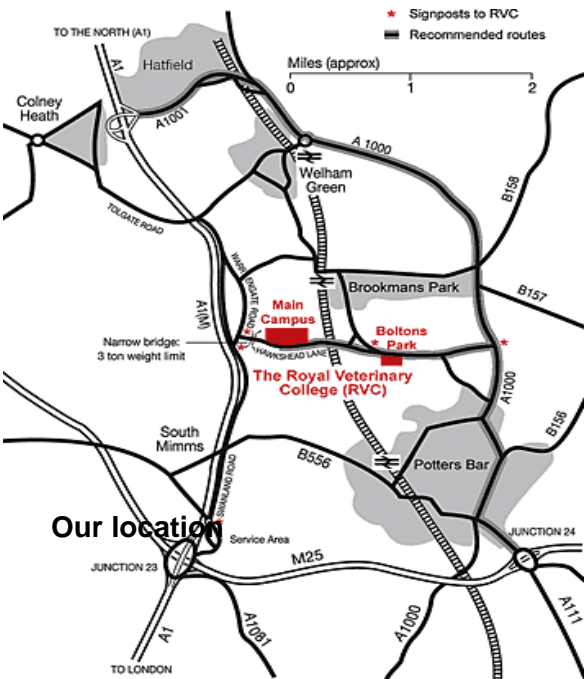
The Royal Veterinary College is conducting scientific research to find out more about positive emotions in dogs. We are currently recruiting owners and their dogs for a study to record tail wagging, facial temperatures and other behaviours of pet dogs in common situations, designed to influence emotional states.



Owners will receive a printed and one digital thermal image photo as a thank you!

Do you:

- ✓ Own a healthy Labrador Retriever, or a first generation cross, aged between 1.5 and 10 years old
  - ✓ Live locally or be willing to travel to our campus in South Mymms? (please see the map below)
  - ✓ Have time (no more than 2 hours) you could spare between February and May 2014 (weekdays or weekends)
- Then you could participate and help us with our research!



- ✿ The study will involve measuring tail wagging and other behaviours; a small monitor will be attached to your dog's tail using a fabric bandage and sticky foam pads
- ✿ Dogs will be asked to stand still in an arena, so knowing the command "stand" or "stay" will be useful!
- ✿ A thermal imaging camera will also record facial temperatures
- ✿ A session would take a maximum of 2 hours for you and your dog, and would be scheduled at a time to suit you

For more information and to register your interest in participating, please contact the researcher, Miss Emma Buckland on 01707 667045, or 07925221255 or at [elbuckland@rvc.ac.uk](mailto:elbuckland@rvc.ac.uk)



Thank you!